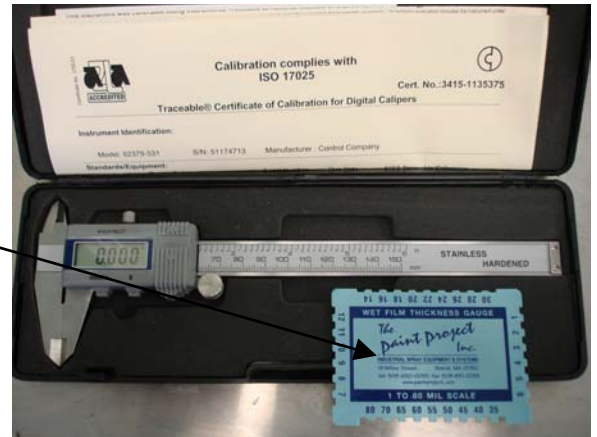


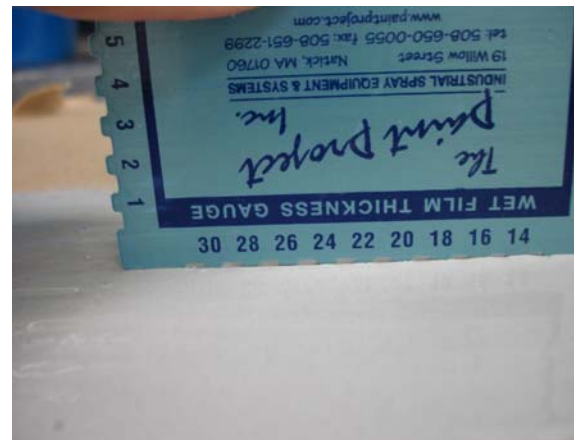
COATING FIELD MEASURING TECHNIQUES

WET FILM MEASURING (WHILE APPLYING)

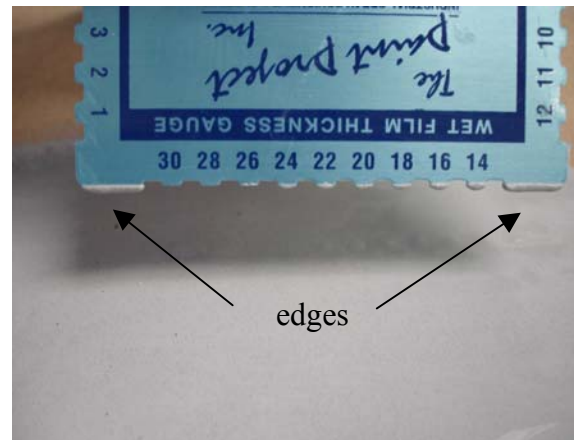
A) A wet film gauge should be used. These can be purchased at any paint store.



B) While the paint is still wet, firmly dip the Teeth on the edge of the gauge into the paint so the 2 outer edges hit the substrate. Be sure gauge is perpendicular to the surface for a good reading.



C) Remove the gauge and inspect where paint touched teeth. This is your wet thickness...here seen as 26 mils (or .026").

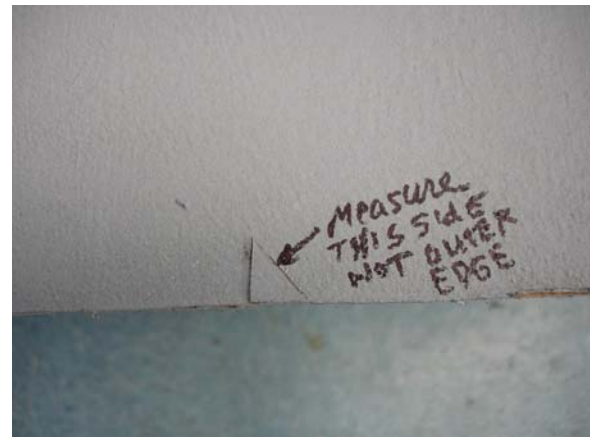


DRY FILM MEASURING (WHEN DRY)

A) The caliper should be used for this measurement.



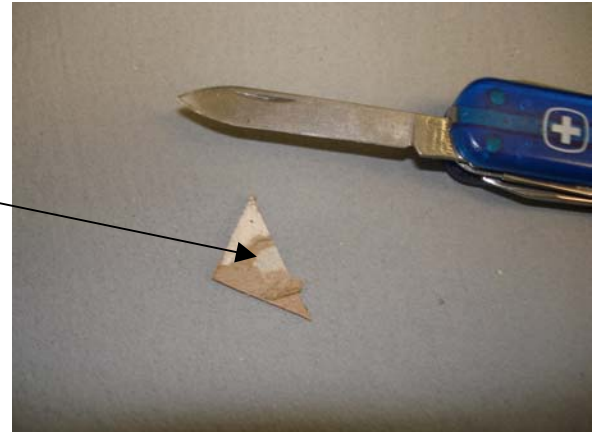
B) Cut a small sample with a penknife or razor. A triangular piece works well. Measure thickness away from the outer most edge or wall corner you cut from.



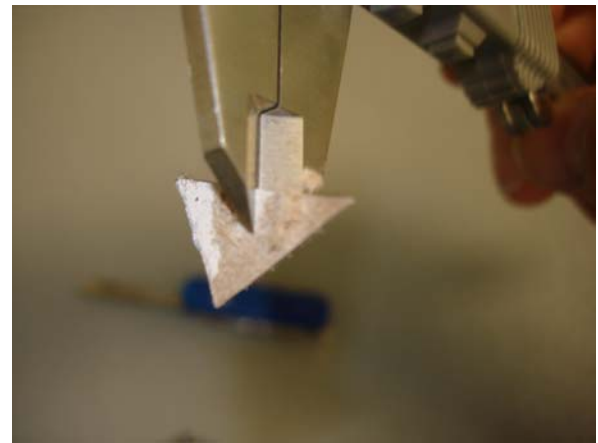
C) carefully peel the sample away from the substrate. YOU WANT to take substrate material with you.



D) Use the penknife or razor to scrape away the substrate until you just see the coating coming through.



E) Measure the dried coating thickness with the tapered tip of the caliper. Be sure to only get coating and no substrate.



F) Read the caliper for thickness. The caliper should only lightly touch the coating. The sample should almost fall out of the jaws by its own weight. Several samplings are recommended.



END OF DOCUMENT

TPR² Corporation

161 Interstate Lane, Waterbury, CT 06705 (O)203-756-8772 (F) 203-756-8779

www.tpr2.com