



REPORT NUMBER: 3161466SAT-005
ORIGINAL ISSUE DATE: October 29, 2008
REVISED DATE: November 19, 2008

EVALUATION CENTER
Intertek Testing Services NA Inc.
16015 Shady Falls Rd.
Elmendorf, TX 78112

RENDERED TO

Demilec USA, LLC
2925 Galleria Drive
Arlington, TX 76011
USA

PRODUCT EVALUATED: SEALECTION 500™ 5-1/2" walls and 10" ceiling with
TPR² Fireshell® F10E
EVALUATION PROPERTY: Heat Release, Flame Spread

**Report of testing SEALECTION 500™ with 14 mils of TPR²
Fireshell® F10E for compliance with the applicable requirements
of the following criteria: NFPA 286 and IBC 803.2.1.**

This report is for the exclusive use of Intertek's Client and is provided pursuant to the agreement between Intertek and its Client. Intertek's responsibility and liability are limited to the terms and conditions of the agreement. Intertek assumes no liability to any party, other than to the Client in accordance with the agreement, for any loss, expense or damage occasioned by the use of this report. Only the Client is authorized to copy or distribute this report and then only in its entirety. Any use of the Intertek name or one of its marks for the sale or advertisement of the tested material, product or service must first be approved in writing by Intertek. The observations and test results in this report are relevant only to the sample tested. This report by itself does not imply that the material, product, or service is or has ever been under an Intertek certification program.

TEST REPORT

1 Table of Contents

INTRODUCTION	3
TEST SAMPLES	3
TESTING AND EVALUATION METHODS	3
TESTING AND EVALUATION RESULTS	5
CONCLUSIONS	7
APPENDICES	
Appendix A: DATA	8
Appendix B: PHOTOGRAPHS	13
LAST PAGE	21

2 Introduction

Intertek Testing Services NA (Intertek) has conducted testing for Demilec USA, LLC, on *SELECTION 500™* spray foam covered with TPR² Fireshell® F10E to evaluate heat release and flame spread properties when subjected to specific ignition conditions. Testing was conducted in accordance with NFPA 286. This evaluation was performed on October 16, 2008.

3 Test Samples

3.1. SAMPLE SELECTION

The sample materials were witnessed in production by Intertek Inspector Robert Rombuck, on September 5, 2008, at the Demilec (USA) plant at 2925 Galleria Drive, Arlington TX, 76011. The sealed containers were inspected prior to the spraying of the test assembly, see Appendix B. The spray foam was applied on September 23, 2008.

3.2. SAMPLE AND ASSEMBLY DESCRIPTION

The test specimen consisted of three walls with 2x8 studs, 48 inches o.c. and 2x12 joists, 24 inches o.c. with a 15/32 inch plywood backing. The final interior dimensions were 8 feet high, 8 feet wide and 12 feet deep. Ceiling joists ran parallel to the short dimension of the room. The corner was constructed such that two studs met at their edges, forming a 90° angle.

On top of this substrate, the spray foam was applied to a thickness of 5-1/2 inches on the walls and 10 inches on the ceiling. There was no significant over spray outside of the cavities. The wall foam, studs, ceiling foam and joists were covered with 14 mils of TPR² Fireshell® F10E.

See Photos in Appendix B for a visual depiction of the description.

4 Testing and Evaluation Methods

This standard describes a method for determining the contribution of textile wall and ceiling coverings to room fire growth during specified fire exposure conditions. This method is not intended to evaluate the fire endurance of assemblies, nor is it able to evaluate the effect of fires originating within the wall assembly. The method is not intended for the evaluation of floor finishes.

This method is to be used to evaluate the flammability characteristics of finish wall and ceiling coverings when such materials constitute the exposed interior surfaces of buildings. This test method does not apply to fabric covered less than ceiling height, freestanding, prefabricated panel furniture systems or demountable, relocatable, full-height partitions used in open building interiors. Freestanding panel furniture systems include all freestanding panels that provide

visual and/or acoustical separation and are intended to be used to divide space and may support components to form complete work stations.

This fire test measures certain fire performance characteristics of finish wall and ceiling covering materials in an enclosure under specified fire exposure conditions. It determines the extent to which the finish covering materials may contribute to fire growth in a room and the potential for fire spread beyond the room under the particular conditions simulated. The test indicates the maximum extent of fire growth in a room, the rate of heat release, and if they occur, the time to flashover and the time to flame extension beyond the doorway following flashover. It does not measure the fire growth in, or the contribution of, the room contents. Time to flashover is defined herein as either the time when the radiant flux onto the floor reaches 20 kW/m^2 or the temperature of the upper air reaches 600°C . A pair of crumpled single sheets of newspaper are placed on the floor 2 feet out from the center of the rear wall and front walls to determine flashover. The spontaneous ignition of this newspaper provides the visual indication of flashover.

The potential for spread of fire to other objects in the room, remote from the ignition source, is evaluated by measurements of:

1. The total heat flux incident on the center of the floor.
2. A characteristic upper-level gas temperature in the room.
3. Instantaneous net peak rate of heat release.

The potential for the spread of fire to objects outside the room of origin is evaluated by the measurement of the total heat release of the fire.

TEST EQUIPMENT AND INSTRUMENTATION

IGNITION SOURCE

The ignition source for the test is a gas burner with a nominal 12- by 12-inch porous top surface of a refractory material. The burner used at this laboratory is filled with a minimum 4-inch layer of Ottawa sand.

The top surface of the burner through which the gas is applied is positioned 12 inches above the floor, and the burner enclosure is located such that the edge of the diffusion surface is located 1 inch from both walls in the left corner of the room opposite from the door.

The gas supply to the burner is C.P. grade propane (99 percent purity). The burner is capable of producing a gross heat output of 40 ± 1 for five minutes followed by a 160 ± 5 kW for ten minutes. The flow rate is metered throughout the test. The design of the burner controls is such that when one quarter-turn ball valve is opened, the flow of gas to the burner produces 40 kW and when a second quarter-turn valve is opened the combined flow produces 160 kW.

COMPARTMENT GEOMETRY AND CONSTRUCTION

The interior dimensions of the floor of the fire room, when the specimens are in place, measures 8 feet, by 12 feet. The finished ceiling is $8 \text{ feet} \pm 0.5$ inches above the floor. The four walls are at right angles defining the compartment. The compartment contains a 30 ± 0.25 by 80 ± 0.25

inch doorway in the center of one of the 8' by 6' 11" walls. No other openings are present to allow ventilation. The test room is lined with 5/8" type X gypsum wallboard.

PROCEDURE

SUMMARY OF METHOD

A calibration test is run within 30 days of testing any material as specified in the standard. All instrumentation is zeroed, spanned and calibrated prior to testing. The specimen is installed and the diffusion burner is placed. The collection hood exhaust duct blower is turned on and an initial flow is established. The gas sampling pump is turned on and the flow rate is adjusted. When all instruments are reading steady state conditions, the computer data acquisition system and video equipment is started. Ambient data is taken then the burner is ignited at a fuel flow rate that is known to produce 40 kW of heat output. This level is maintained for five minutes at which time the fuel flow is increased to the 160 kW level for a 10-minute period. During the burn period, all temperature, heat release and heat flux data is being recorded every 6 seconds. At the end of the fifteen minute burn period, the burner is shut off and all instrument readings are stopped. Post test observations are made and this concludes the test.

All damage is documented after the test is over, using descriptions, photographs and drawings, as is appropriate.

4.1. TEST STANDARD

NFPA 286.

5 Testing and Evaluation Results

5.1. RESULTS AND OBSERVATIONS

FIRE TESTS

The test was started at 11:55 am on October 16, 2008. The ambient temperature was 77°F with a relative humidity of 52%. The data acquisition system was started and the burner was ignited. Events during the test are described below:

TIME (min:sec)	OBSERVATION
0:00	Ignition of burner. Heat output set to 40 kW.
0:37	The walls began to discolor. No ignition.
0:52	The walls began to smoke.
2:00	The ceiling became obscured by smoke.
2:21	Transient ignition on the back wall.
2:50	Transient ignition on the left side wall.
4:00	Still no steady ignition
5:00	The burner was increased to 160 kW.
6:00	The walls were burning 6-7 feet from the floor.

9:00	Smoke opacity began to decrease. The corner stud ignited.
15:00	The flow of propane was deactivated. Test terminated. Observations continued at customer request.
15:16	The wall foam self extinguished.
15:46	The wood stud self extinguished.

Post Test Observations:

The intumescent and foam were heavily charred and showed signs of receding in the area adjacent to the burner on the back wall, and on the left side wall.

For additional details, see the post-test photographs later in this report.

6 Conclusion


The sample submitted, installed, and tested as described in this report displayed low levels of heat release, low upper level temperatures, and no flames exited the test chamber. The heat flux on the floor did not reach flashover levels. The sample did not spread flames to the ceiling during the 40 kW exposure.

NFPA 286 does not publish pass/fail criteria. One must consult the codes to determine pass fail.

This specimen **MET** the criteria set forth in the 2003 and 2006 IBC Section 803.2.1

INTERTEK TESTING SERVICES NA

Reported by:



C. Anthony Peñaloza
Flammability Testing Team Leader

Reviewed by:

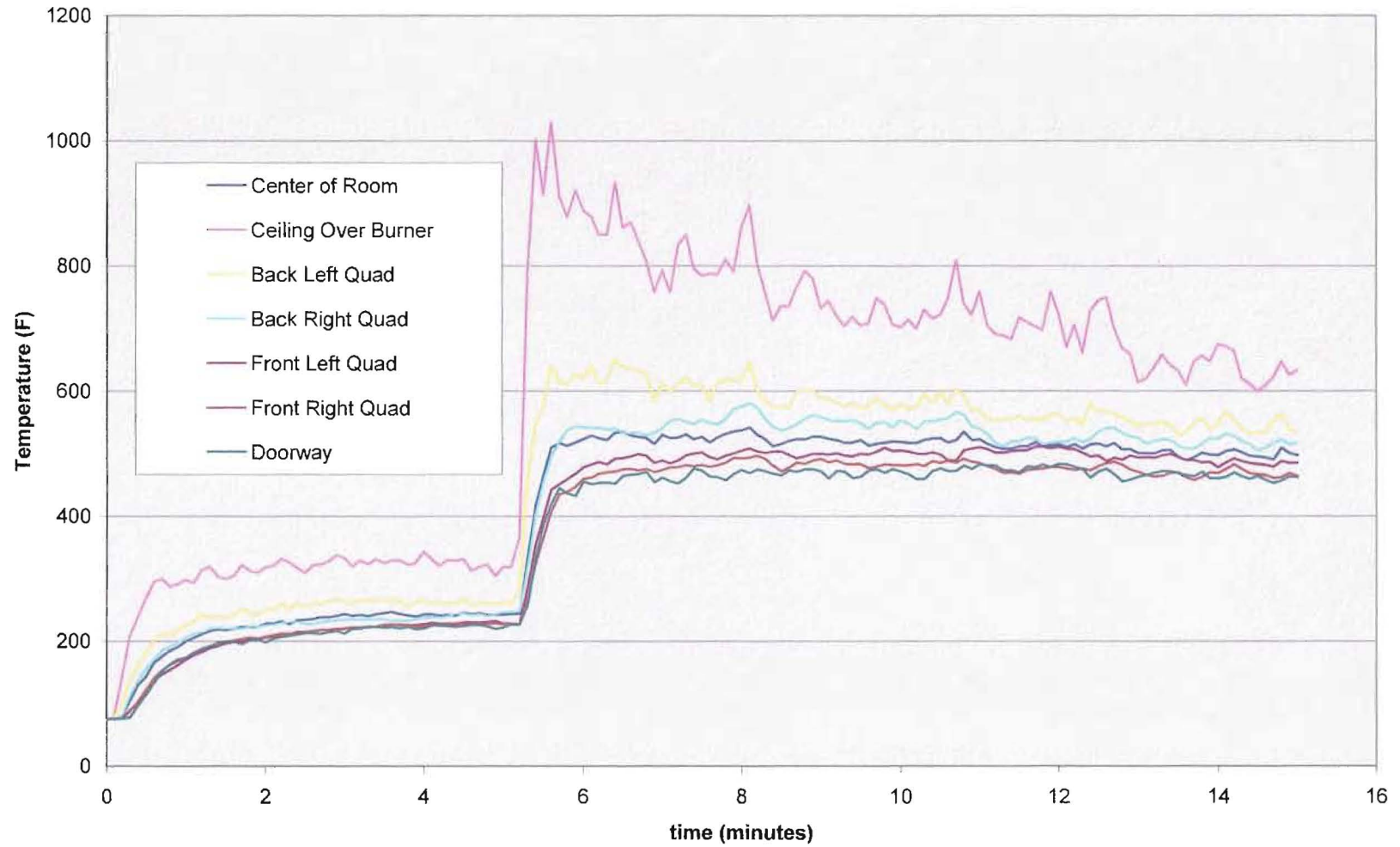


Javier . Trevino
Senior Project Engineer

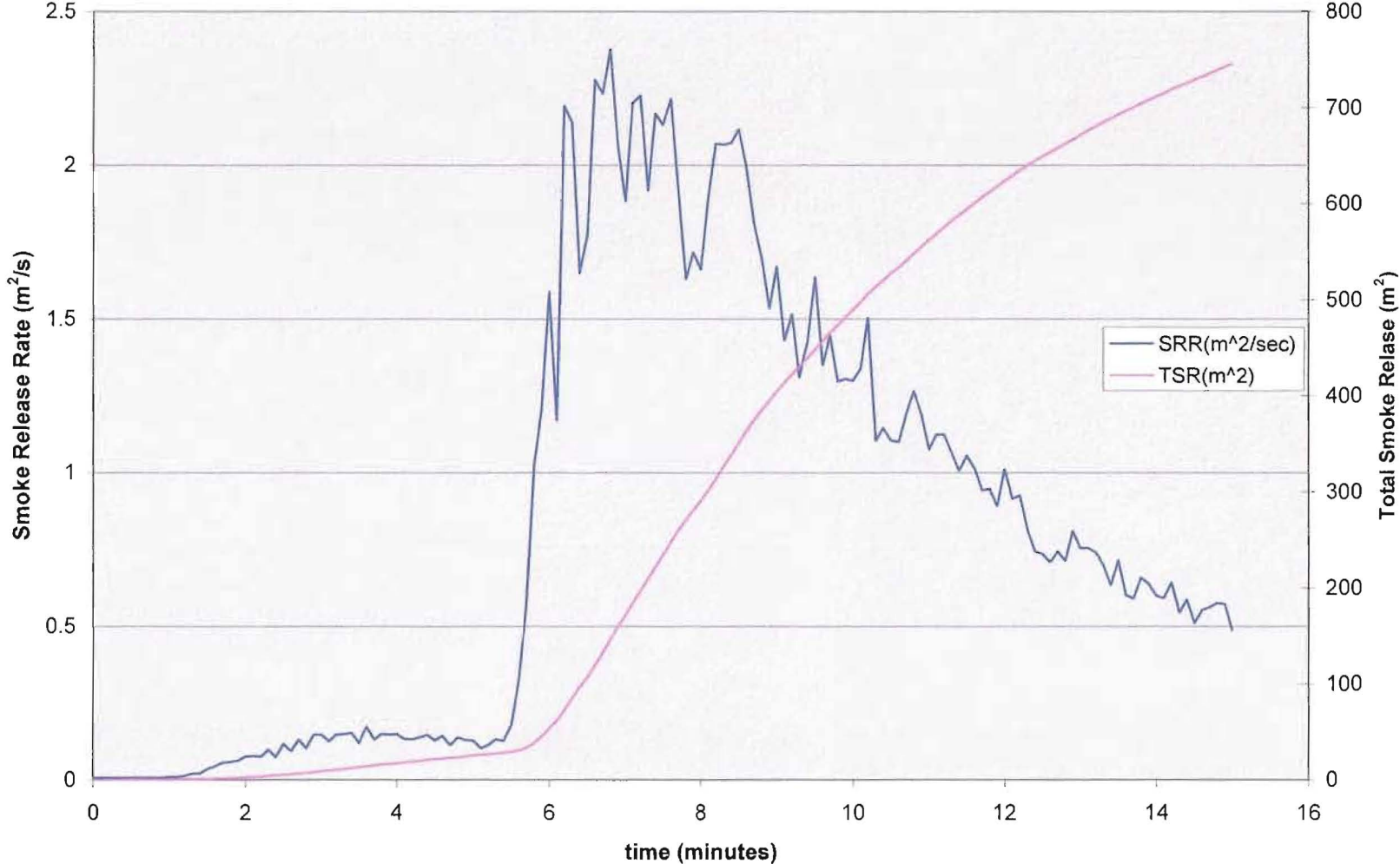
APPENDIX A

Test Data

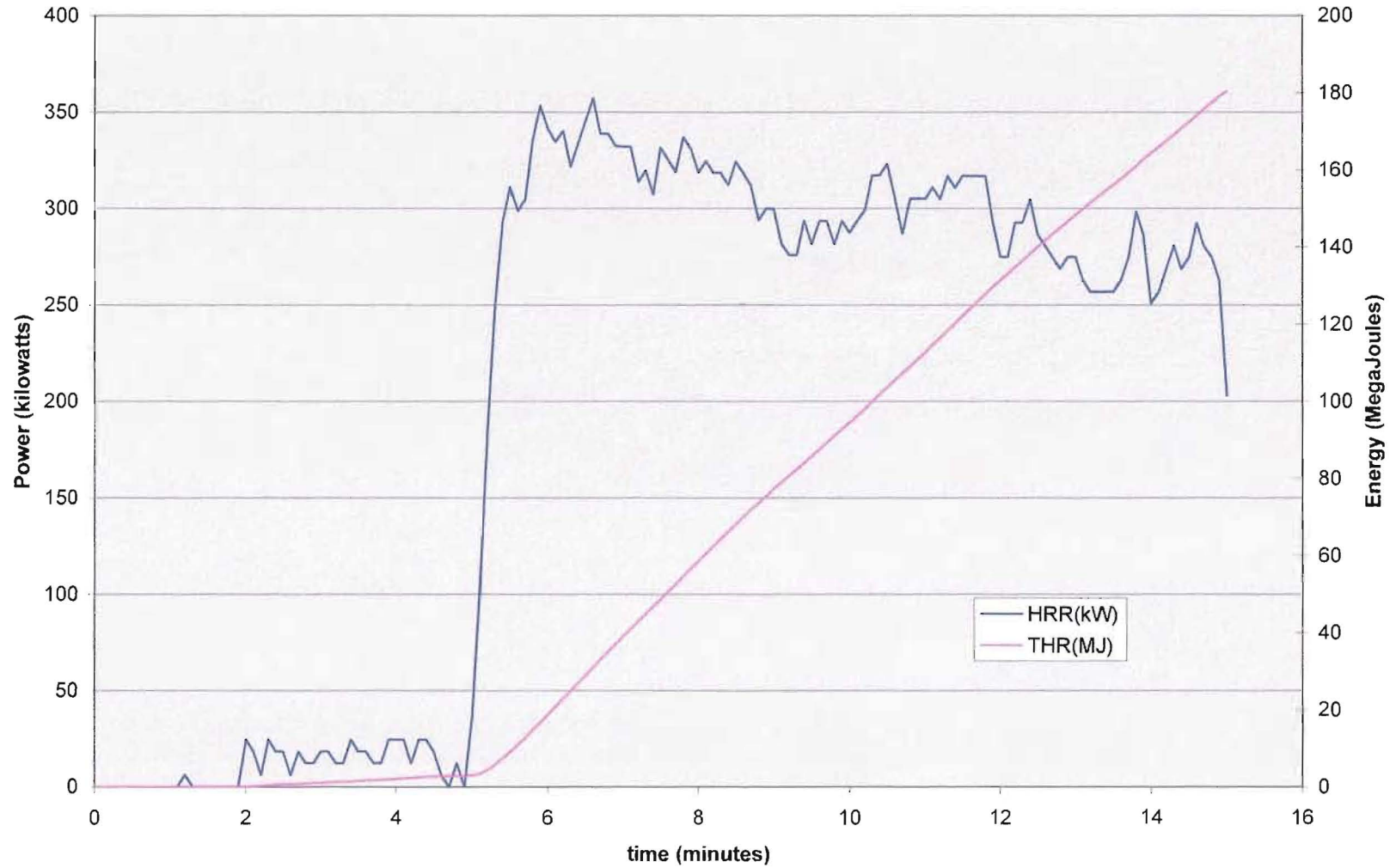
Thermocouple Data



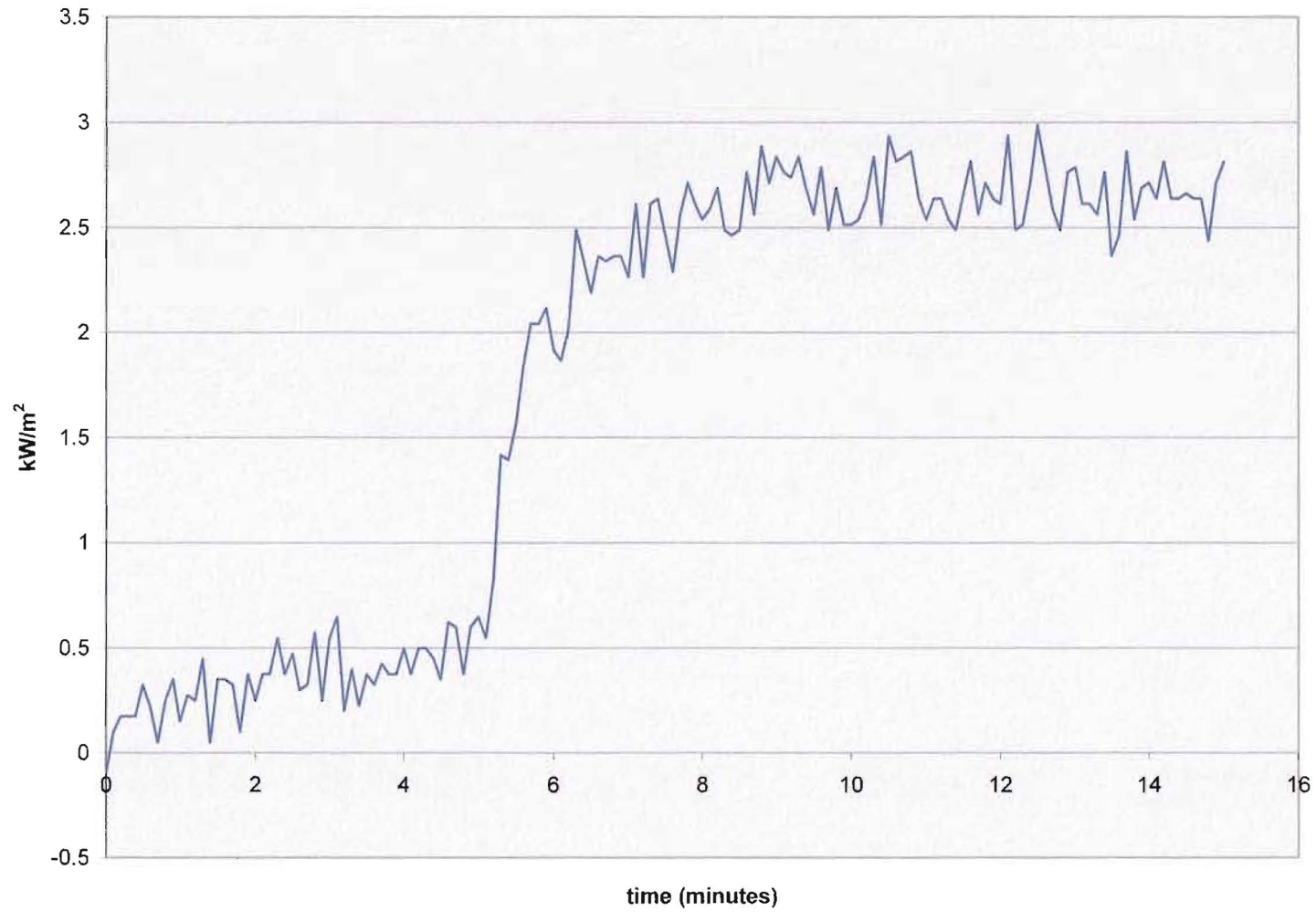
Smoke Release



Heat Release

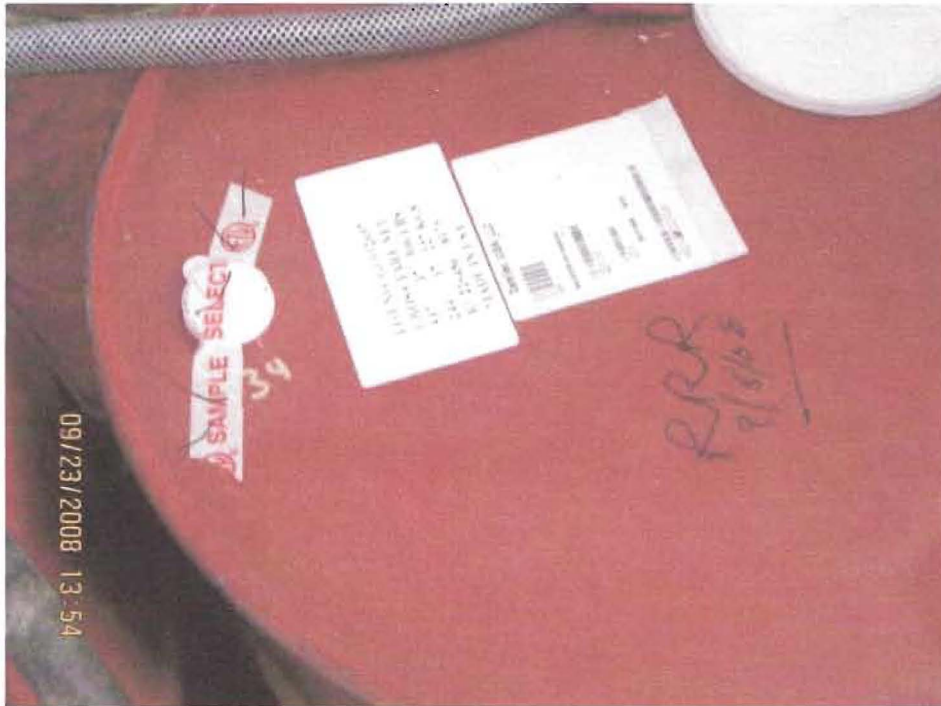


Heatflux



APPENDIX B

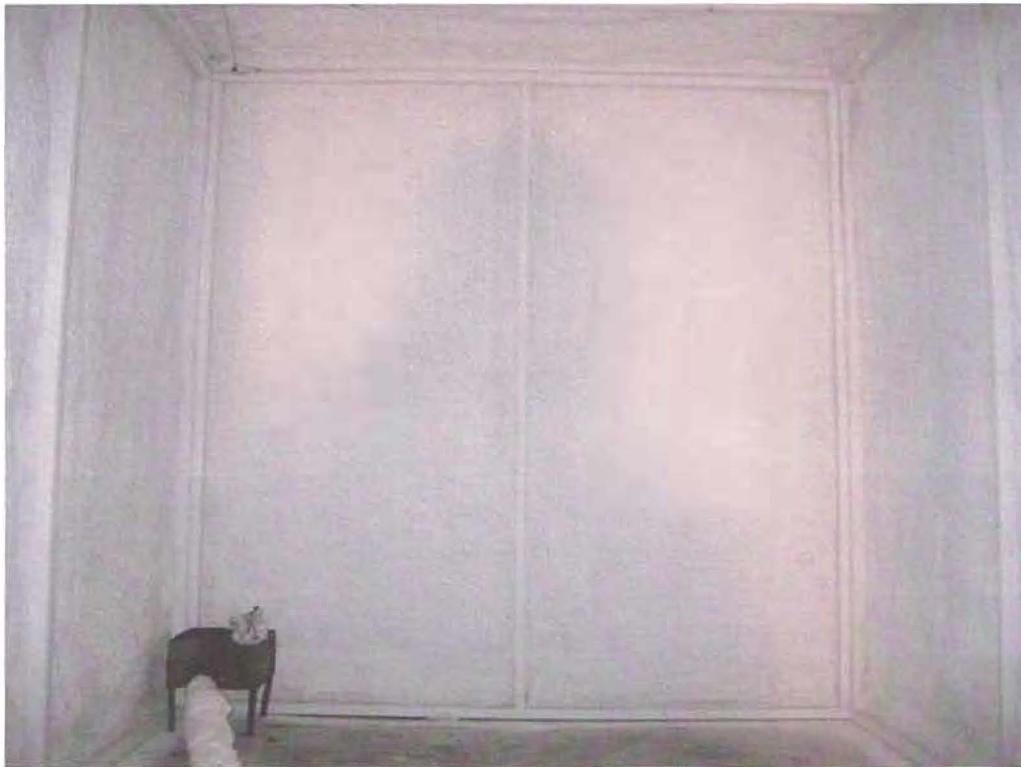
Photographs



SEALECTION A 500, Sealed Sample



SEALECTION B 500 Sealed Sample



Pre-test photo back wall



Pre-test photo ceiling



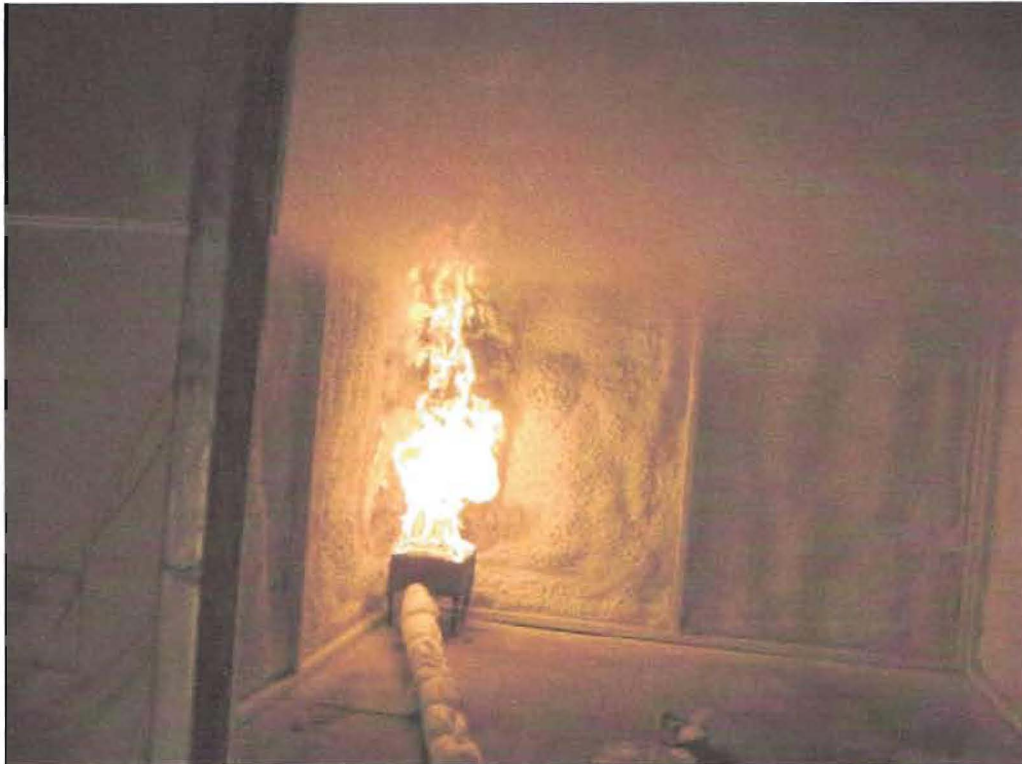
Pre-test photo corner.



Start of test. 40kW



Test photo discoloration



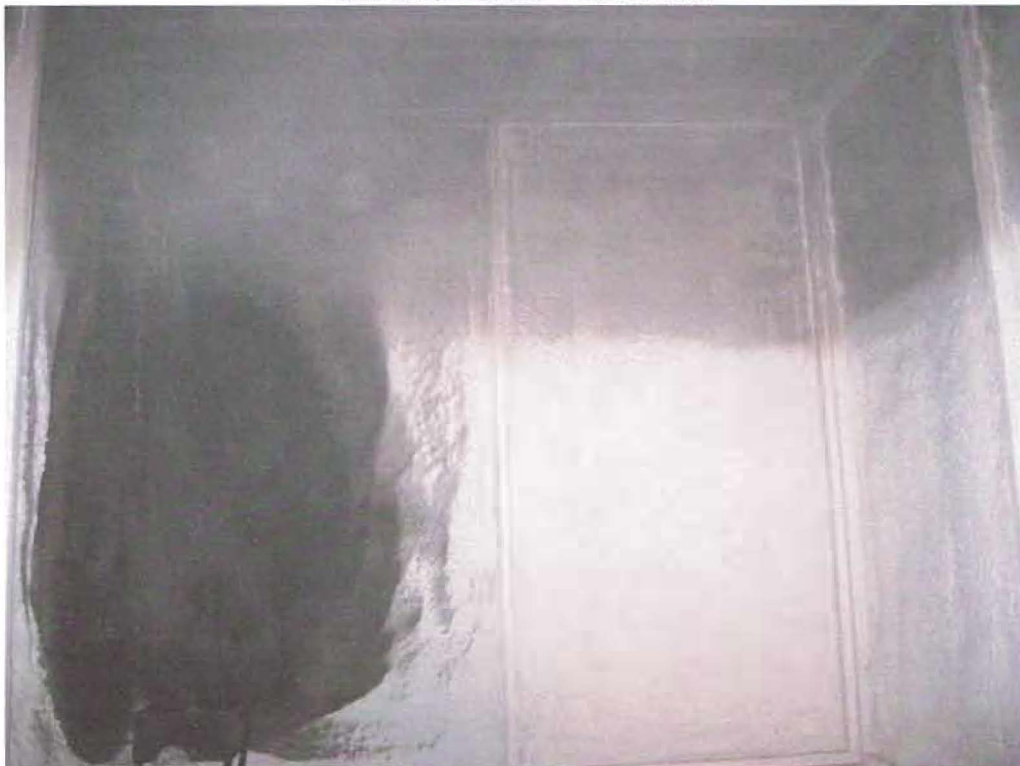
Test photo. Ignition.



160kW and smoke ceiling



Test terminated. Afterflame.



Post-test photo



Post-test photo of ceiling



Detail of corner

LAST PAGE OF TEST REPORT

REVISION SUMMARY

DATE	SUMMARY
November 19, 2008	Removed extra space in product name, SEALECTION, throughout
November 19, 2008	Corrected product application thickness
November 19, 2008	Amended test sample information to include sampling details and photographs of sealed containers.
November 19, 2008	Revised TPR ² Fireshell product name, throughout
November 19, 2008	Post-test observations amended.
November 19, 2008	Corrected typographical errors in conclusions
November 19, 2008	Corrected typographical error in heat release rate graph.
November 19, 2008	Revised Table of Contents as needed.